

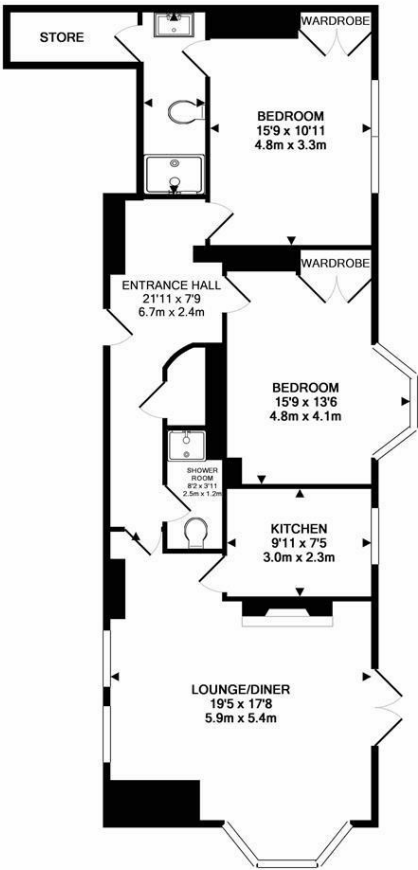


****AVAILABLE SEPTEMBER 2025** **PRIVATE WALLED GARDEN** **GROUND FLOOR CONVERSION FLAT** **FURNISHED**** Occupying the ground floor of this semi-detached residence, a generous two-bedroom conversion apartment centrally located on Osborne Road, Jesmond. Situated close to conveniences including nearby Waitrose, the shops & cafés of Acorn Road, the restaurants of Osborne Road as well as Jesmond Dene and excellent local transport links including West Jesmond Metro Station only a short walk away.



Exceptionally presented throughout and boasting close to 950 Sq ft, the accommodation briefly comprises: stylish communal entrance hall; private entrance hall with polished wood floors, store cupboard and shower room/WC; 19ft lounge/diner with tall ceilings, walk-in bay, period fireplace and west-facing French doors that lead onto the patio and private garden; modern fitted kitchen with integrated appliances. The main hallway leads back to two generous double bedrooms, both with fitted storage, bedroom one with en-suite shower and walk-in wardrobe, bedroom two with west facing walk-in bay. Externally, the delightful west-facing private gardens are laid mainly to lawn with planted borders and walled/ fenced boundaries, also with a shed and paved patio seating area with gated access back to the communal driveway. With one allocated off street parking space available for the apartment which is ideally placed by the side of the garden gate for easy access. A truly stunning apartment, fully furnished to a high standard, ideal for a professional couple!

Available 12th September 2025 | £1,650pcm | Ground Floor Garden Apartment | 944 Sq ft (87.7m2) | Two Double Bedrooms | Impressive 19ft Lounge/Diner | Master Bedroom with En-Suite | Shower Room & WC | Private West-Facing Gardens | Allocated Off-Street Parking | Excellent Location | Furnished | Council Tax Band: C | GCH & DG | EPC Rating: D



£1,650 PCM

IMPORTANT NOTE: These particulars and the descriptions and measurements herein do not constitute representation and whilst every effort has been made to ensure accuracy, this cannot be guaranteed.

